

JHF

Product Introduction



Model: JHF F3900

JHF
JHF Technology Group Co., Ltd

----- F3900 Flatbed UV Industrial Printer -----

Introduction

JHF released a super wide flatbed industrial printer with optional industrial-grade head, F3900. It delivers multiple layers printing with white or varnish. In addition, its variable ink droplet technology ensures that stunning images can be printed on a variety of media with high speed. F3900 covers wide application fields, including sheet metal processing, architectural ceramics, decorative flooring, packaging paperboard and others. And it realizes instant delivery of industrial production from customized design to terminal products.



Technical Specifications

Printhead	Kyocera (4C+W)*2 / Ricoh G6 (2 to 8 heads) / KM1024a(4C*3+2W)(optional)		
Ink	UV Ink		
Curing	LED UV Curing		
Printing Speed	Kyocera (4C+W)*2	Ricoh G6 (2 to 8 heads)	KM 1024a(4C*3+2W)
	600×1200 dpi 125 m ² /h	720×600 dpi 41 m ² /h	726×720 dpi 105 m ² /h
	600×1800 dpi 90 m ² /h	720×900 dpi 33 m ² /h	726×1080 dpi 80 m ² /h
	1200×1200 dpi 65 m ² /h	720×1200 dpi 26 m ² /h	726×1440 dpi 55 m ² /h
(the above mentioned speed is based on speed without smooth, radient effect)			

ps: theoretical parameters

Technical Specifications

Printing Media	Foam board, Acrylic, Aluminum composite panel, Glass, Wood board and other rigid materials.
Printing Size	2500 x 1300mm
Printing Thickness	60mm (120mm optional)
Max Bearing Weight	50 kg/m ² (uniform loading)
Interface	PCIE/Ethernet interface/USB
Carriage Driven	Linear-driven printhead carriage
Rip Software	PrintFactory/Caldera (optional)
Power	Three phase, 380V,11.5KW
Working Environment	18 – 28 °C , 30 – 70% RH
Air Pressure	≥8 kg/ cm ²
Machine Size	4560mm x 2090mm x 1390mm
Machine Weight	1350kg
Note: Multi-rolls kit, pls kindly note it is optional with extra cost if need to order.	

ps: theoretical parameters

Dedicated in Details



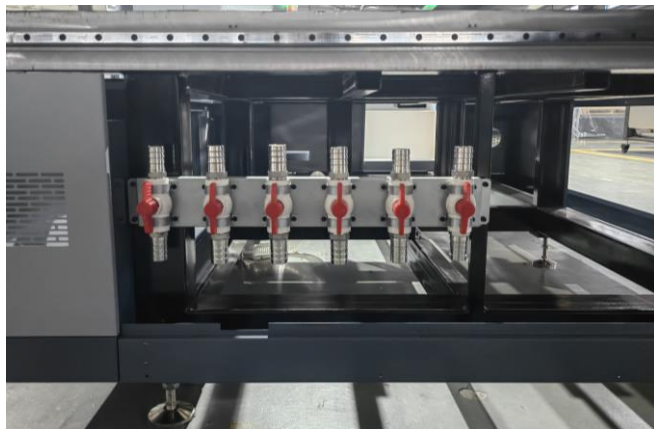
Automatic Safety System



Water-cooling Vacuum Table



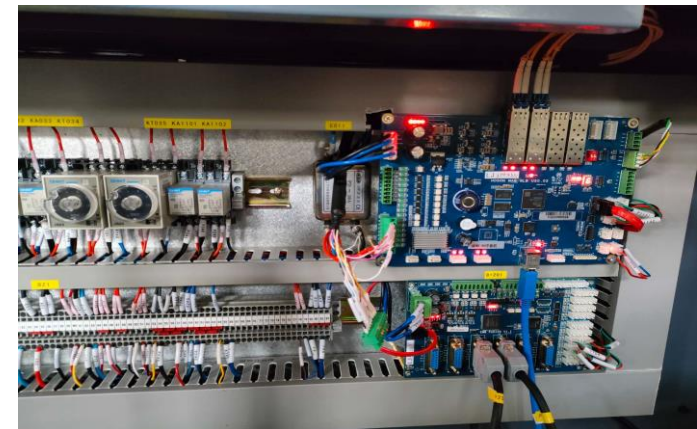
Guide Screw Driven at Y Axis



Distribution valve



Ink Tank



Switchboard

Core Technology Introduction



JHF

科技孕育成果



JHF
至诚客户；
业绩进取；
团结奋斗。

—— 金碧丰的旅程

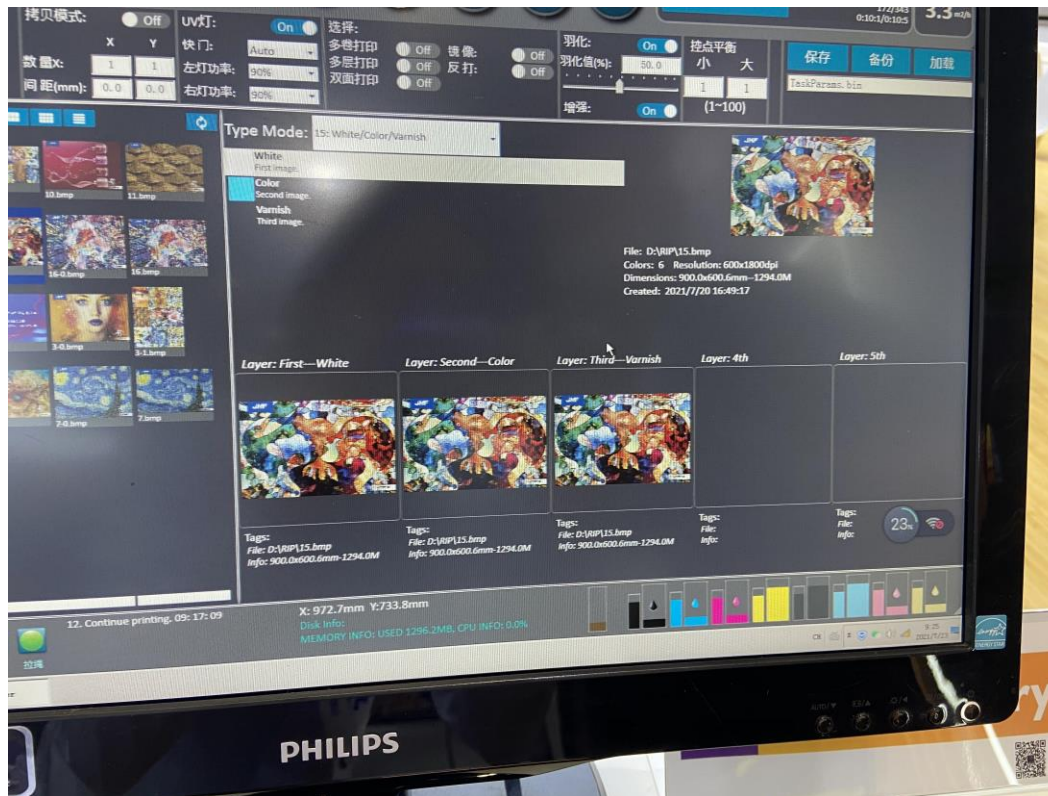
实业创造未来

Separate Vacuum Absorption Table

F3900 has 3 separate absorption zones on its vacuum table, in which each zone can be freely controlled based on the size of the substrate, thereby reducing energy consumption.



User-friendly Controlling System



Negative pressure controlling system for white, color and ink to guarantee the fluidity of every single color of ink and prolong the lifespan of head from clogging and sediment.

Robust Towline

Its well-performanced towline ensures a safe supply of energy and data while under constant motion.



Auto Height Adjustment

Automatic height adjustment function: Through the software to automatically test the height of the base plate to the material, to achieve accurate positioning.



Product Features



Product Features



Multi Customized Configurations on Printing

Tri-Negative Pressure Controlling System

Decreased Compressed Air by 90%

Separate Vacuum Absorption Table

Product Features

Anti-Collision Device

Multi Layers Printing

Auto Height Adjustment

Accurate Stepping and Spot

Unique Sub-tank Controlling Technology

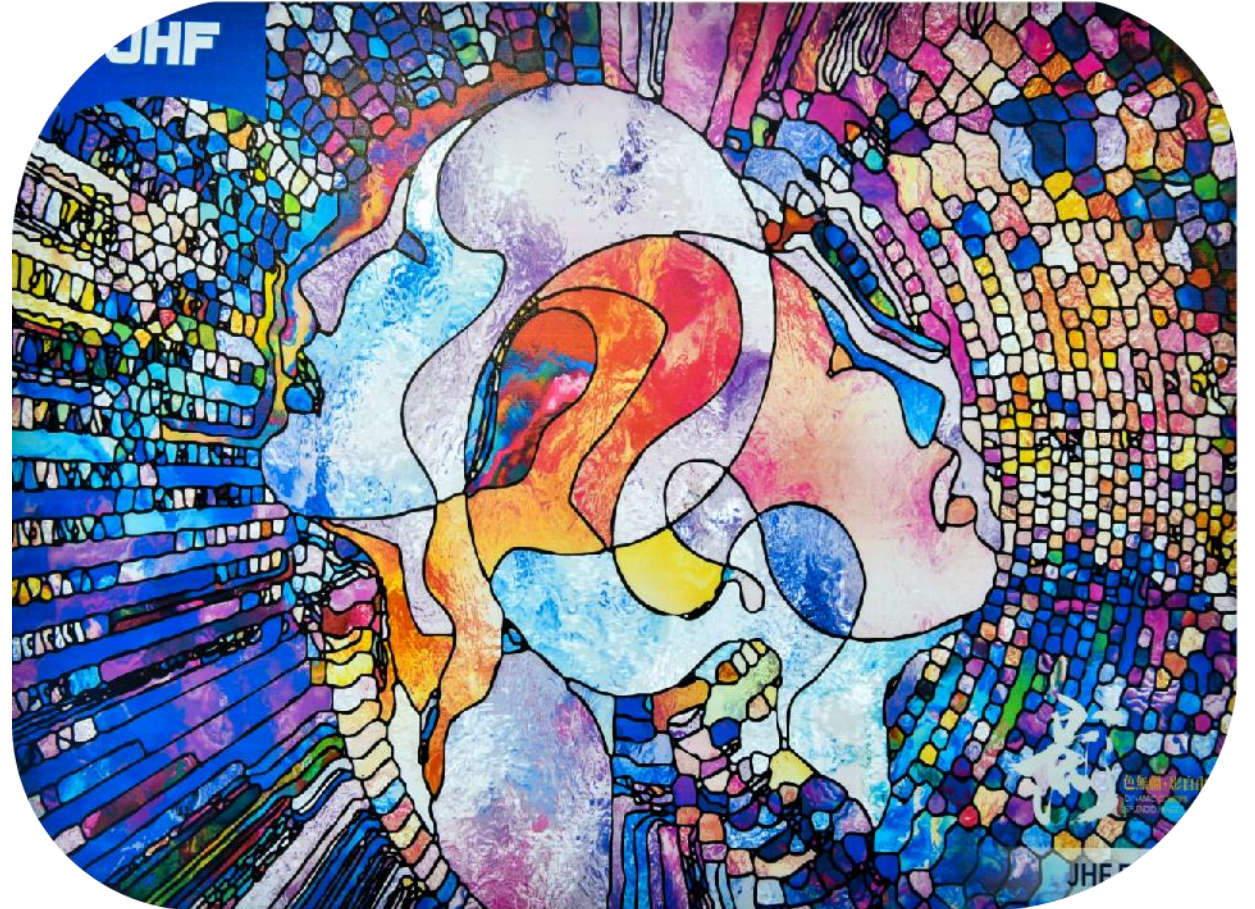


Production Applications



Application

F3900 covers wide application fields, including sheet metal processing, architectural ceramics, decorative flooring, packaging paperboard and others. And it realizes the instant delivery of industrial production from customized design to terminal products.



Transport information



Transport information

Model	F3900
N.W.(kgs)	1520
G.W.(kgs)	1850
Length	4.88
Width	2.88
Hight	1.85
CBM	20.584
CBM	4.88*2.28*1.85M=20.58CBM
Container size	20GP
Bare metal size	4.6*2.15*1.4=13.846CBM



The actual measured box dimensions of 20'GP: 5.890m (length) x 2.342m (width) x 2.388m (height)
The load capacity is approximately 28300kg

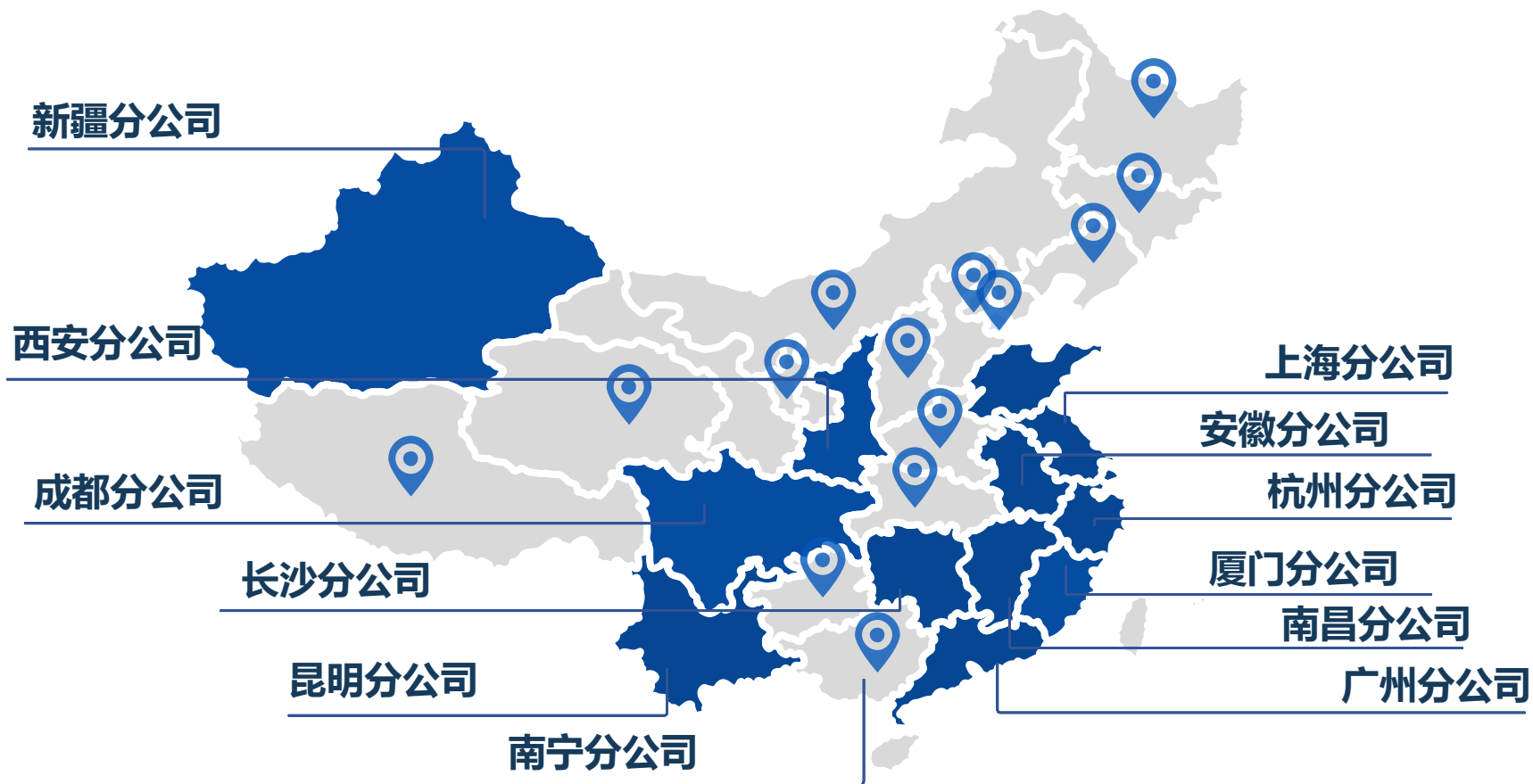


JHF

The Future of Imaging

覆盖全国的服务体系

Company Domestic Layout



12大区域分公司、30多家代理商及遍布全国的服务网点

业务覆盖国内外近百个国家和地区

Company Global Layout

