

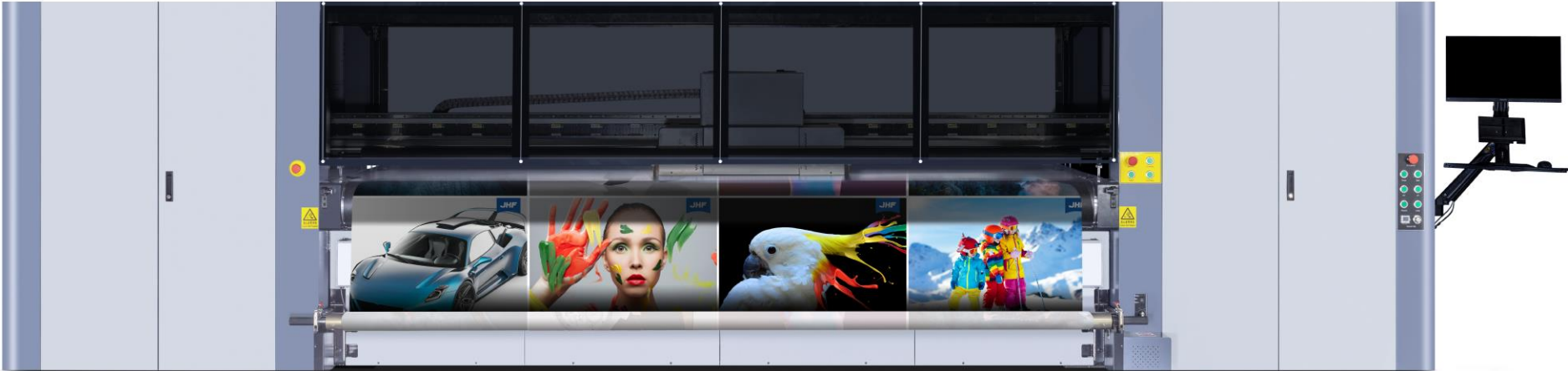
JHF

Product Introduction



Model: JHF M3300

JHF
JHF Technology Group Co., Ltd



ps: The computer is optional

----- **3200mm Wide Multifunctional Hybrid Printer** -----

Introduction



M3300 is a new generation of multi-functional hybrid printer featured with rigid and rolled UV printing. It is widely applicable to a variety of media and helps users develop a broader market. Its industrial printhead brings excellent accuracy and gorgeous colors, making the picture expressive beyond imagination. Towline solution can effectively reduce motion faults and have better stability.

Printhead Specifications

Printhead	Konica Minolta (6PL or 13PL)			
Printing Speed (theoretical parameters)			6C+W	4C*3
	2 Pass	540*720 dpi	60 m2/h	180 m2/h
	3 Pass	540*1080 dpi	43 m2/h	130 m2/h
	4 Pass	540*1440 dpi	31 m2/h	90 m2/h

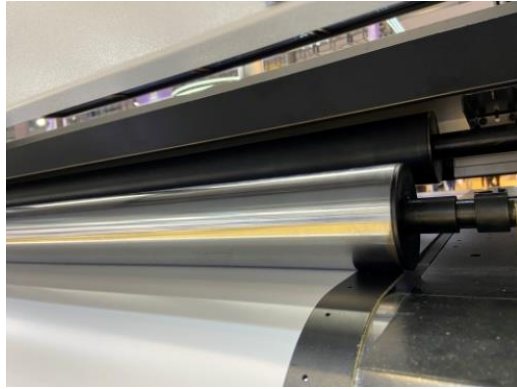
Printhead	Kyocera KJ4A			
Printing Speed (theoretical parameters)			4C (One Row)	4C (Two Rows)
	4 Pass	600*1200dpi	80 m2/h	150 m2/h
	6 Pass	600*1800dpi	65 m2/h	100 m2/h
	8 Pass	1200*1200dpi	45 m2/h	80 m2/h

ps: theoretical parameters

Technical Specifications

Printing width	3200mm
Printing thickness	≤50mm
Color	CMYK; CMYKLcLm; CMYKLcLmW
Optimum temperature	18-28°C
Optimum humidity	30%-70% RH
Machine power	11.5KW/19A
Input voltage	380V /50/60Hz
Machine size	6260mm x 1770mm x 1800mm
Machine weight	2550kg
Data transmission	PCIE (for Kyocera head), USB (for Konica head)
Color management software	RIP software Caldera or PrintFactory
Substrates	Rigid media: glass, wood plate, ceramic tile, metal plate, acrylic board, PVC expansion sheet, crystal, marble, corrugated board. Flexible media: flexible film, 3P cloth, fabric, wallpaper, leather, banner, reflective film, canvas and other flexible materials.

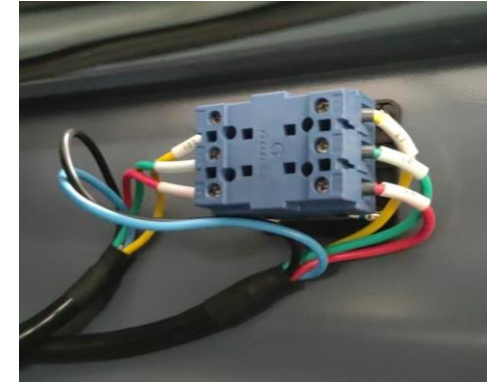
Dedicated in Details



Back Controlling Rollers



Anti-collision Sensors



General Power with Wiring



Front LED Lamp



Air Supply Connector



Ink Supply System

Dedicated in Details



Printing Platform



Interface of Expanded Platform



Extension Printing Table



Towline



Kyocera Printhead



Extension Printing Table

Product Features



Product Features

Color, beyond imagination

Explore & foresee the future

Application, infinite possibilities

Extraordinary value



Product Features



Motion failure solution

Convenient color management software

Stable adsorption Platform

Switchable feeding system

LED cold light source

High speed printing

Stable Ink supply system

Core Technology Introduction



JHF

科技孕育成果



JHF
至诚 客户；
业绩 进取；
团结 奋斗。

—— 金碧丰的愿景

实业创造未来

Accurate and Stable Platform

JHF has upgraded its printing platform, which can absorb the soft materials on its platform solidly, esp for PE film and thin materials without stepping deviation and wrinkles.



Double Roller Feeding

In double roller feeding system, air shaft and double roller are optional, depending on the weight of the material, to make printing more stable.

With M3300, you get the excellent high quality, productivity and reliability on massive roll materials or thin materials. It is not only ideal for outdoor applications; it is also perfect for high-end indoor displays.



LED light curing solution

Using LED cold light source can effectively reduce energy consumption, be more green and environmental protection, and help sustainable development.

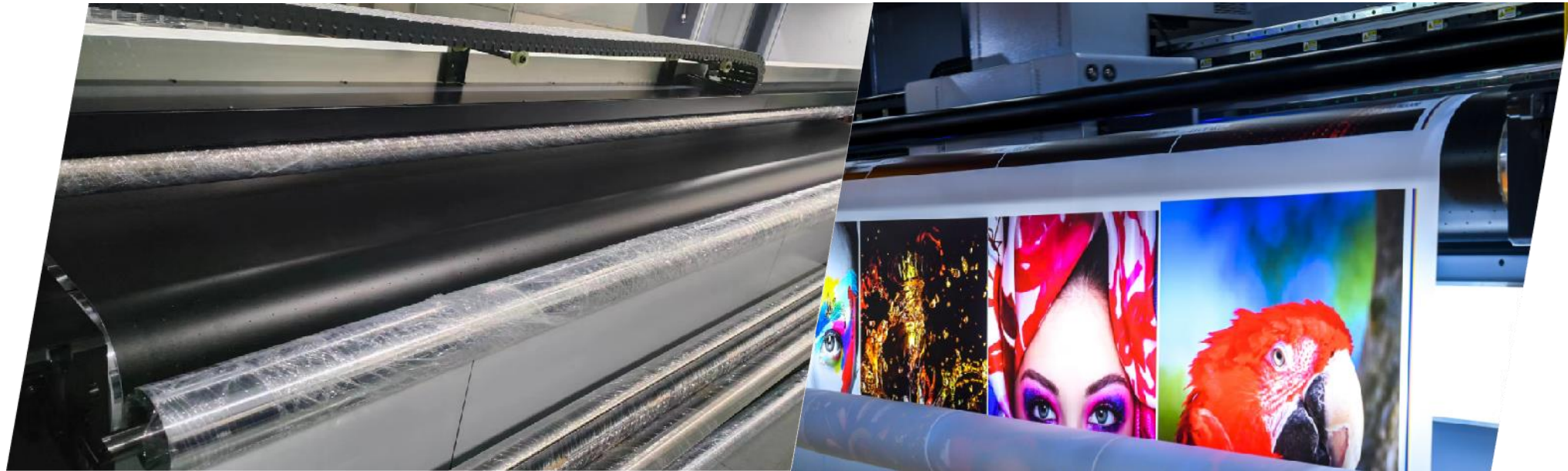


Upgraded Feeding Material



M3300 is with perfect feeding system, so that the material does not deviate from its original position, no wrinkle.

Rubber Belt



M3300 printers featured with a rubber belt, making feeding more smoothly without rewind lines.

Linear Motor and Lead Rail



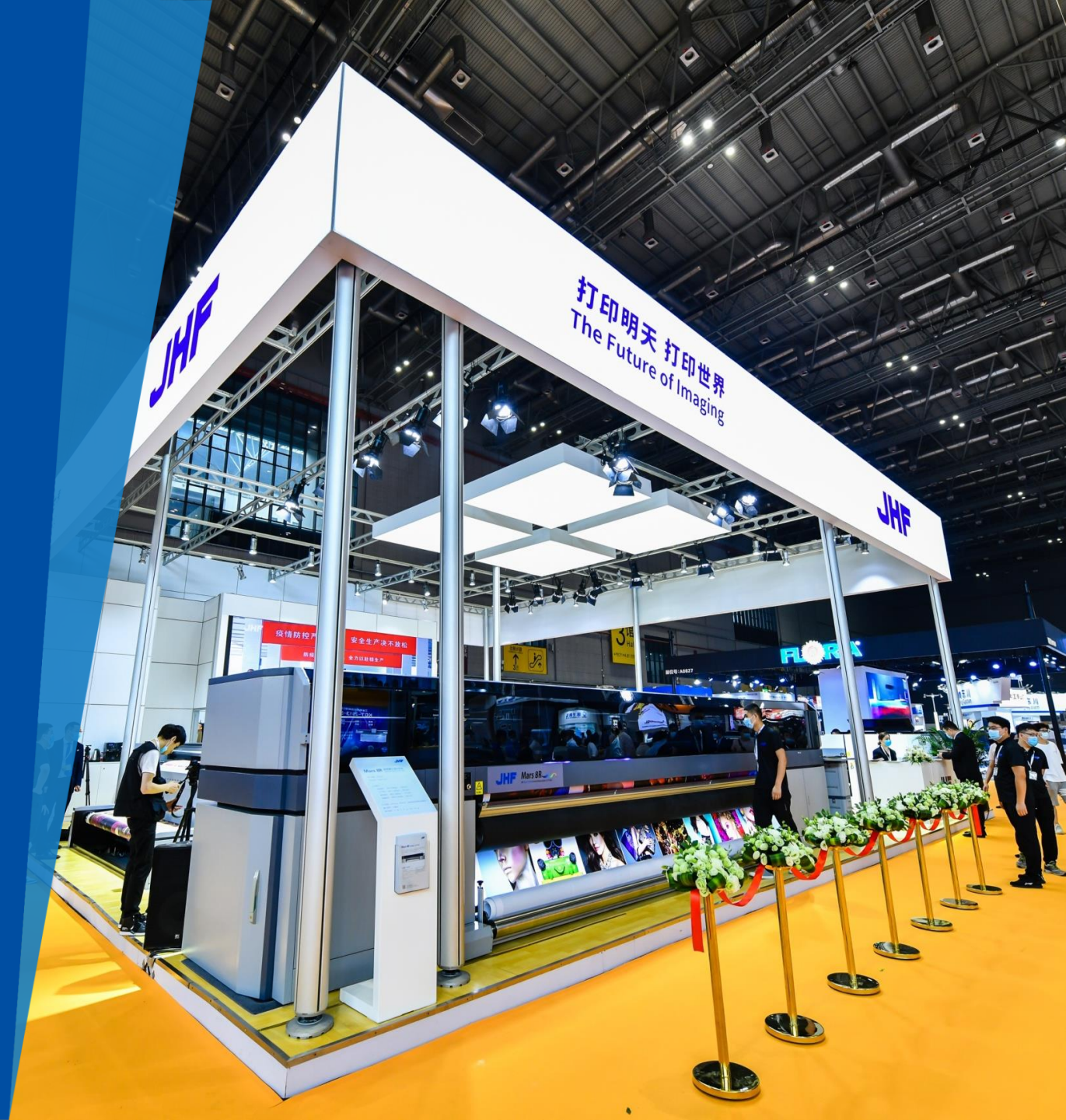
M3300 uses linear motor instead of belt drive, which is very stable, noiseless and offering prolonged service life. Errors caused by gear ratios are also avoided.

Auto Height Adjustment

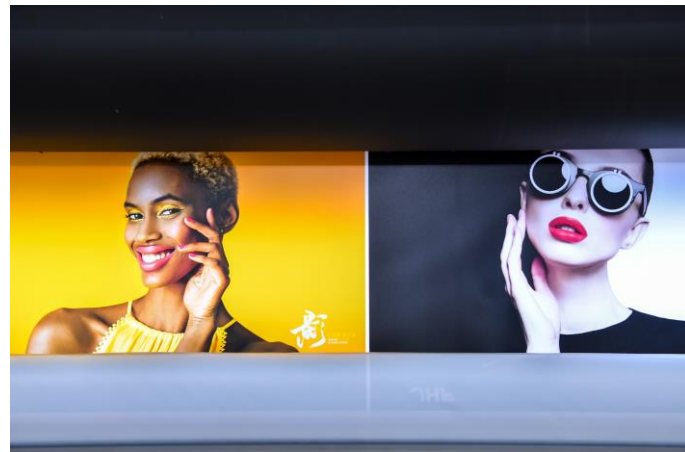
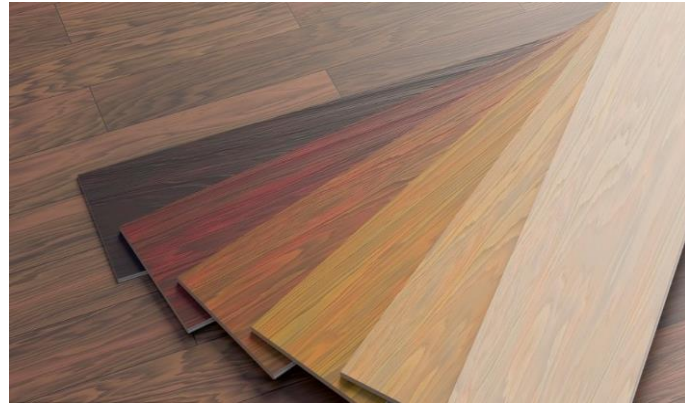
Automatic height adjustment function: Through the software to automatically test the height of the base plate to the material, to achieve accurate positioning.



Production Applications



Application



For diversified customization needs, M3300 adds more versatility both for soft and rigid materials with its unique ink circulation to your business as it expands your range of applications.

Its expanded flatbed platform enables you to print on rigid materials as well such as corrugated boards, rigid plastics, exhibition panels, aluminum composite panels, glass, wood, bamboo, ceramic tile, metal board and acrylic board.

Transport information



Transport information

Model	M3300	
Note	Printer Body	Printing Table
N.W.(kgs)	2550	120
G.W.(kgs)	3250	500
Length	6.5	3.88
Width	1.9	1.53
Hight	2.3	1.72
CBM	25.405	10.211
CBM	6.4*2.2*2.1M =29.568CBM	3.88*1.53*1.75M =10.39M
Baremetalsize	6.26*1.77*1.8M=19.94CBM	
Container size	40HQ	



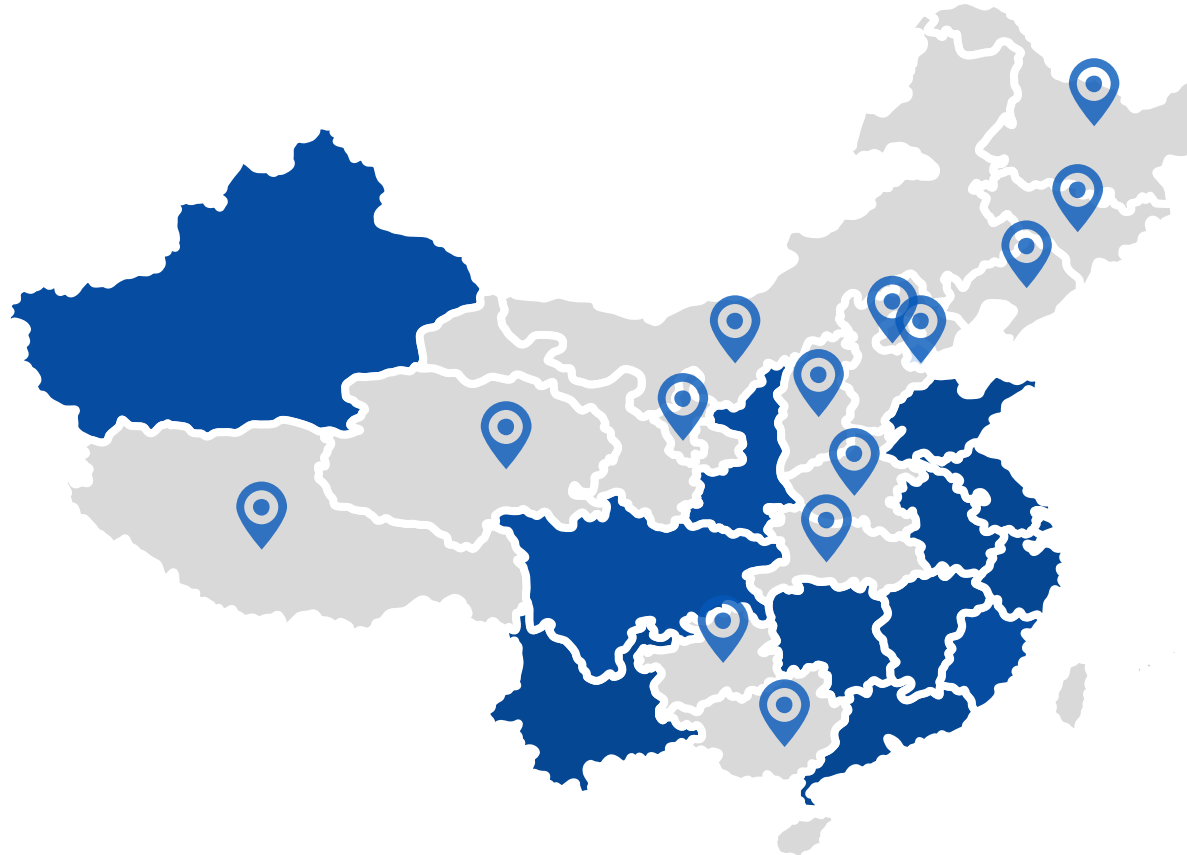
The actual measured box dimensions of 40'HQ : 12.017m (length) x 2.342m (width) x 2.693m (height)
The load capacity is approximately 28700kg



JHF

The Future of Imaging

Company Domestic Layout



12 regional branches, more than 30 agents and service outlets across the country

Company Global Layout

